



# WELNAMIS

Binaural Acoustic & Dynamic Stimulation



# POWER NAPPING WITH WELNAMIS

Gharieni Welnamis – The Binaural Acoustic & Dynamic Stimulation is a computer-controlled acoustic and vibrational therapy that trains the brain to relax and benefit from deep relaxation techniques.

Using specific vibrations and binaural audio frequencies, the Welnamis System makes it possible for even the busiest minds to achieve deep levels of relaxation in a 30 or 60 minute ther-

apy session. Similar to meditation, specific sounds slow down mental activity and vibrational frequencies act specifically on the energy centers (chakras) of the body.

The foundational therapy is the Quantum Harmonic audio therapy. It delivers symptom-reducing and resilience-building multi-layered programs through stereo headphones.

The Welnamis system can be combined with other treatments, be self guided, thereby not needing the presence of a therapist. For the pure Welnamis experience no therapist is necessary.

The system was developed by American scientists to treat post-traumatic stress disorders (PTSD) of American veterans.

With the Welnamis System Gharieni offers this technology to the world of Spa and Wellness.

AWARDED WITH



**SUPPORTS TREATMENT  
OF POST-TRAUMATIC  
STRESS DISORDERS (PTSD)**

**SUPPORTS TREATMENT  
OF ANXIETY  
& PANIC ATTACKS**

**POWER NAPPING &  
DEEP RELAXATION  
IN SHORTEST TIME**

**REMOVAL OF  
MENTAL  
BLOCKAGES**

**IMPROVES  
SLEEP QUALITY &  
QUANTITY**

**INCREASED  
CREATIVITY**

**REDUCTION  
OF STRESS &  
MOOD SWINGS**

**SUPPORTS THE  
IMMUNE SYSTEM**

**INCREASES THE  
ABILITY TO  
CONCENTRATE**

**SCIENTIFICALLY  
PROVEN**

- Read more on p. 9

**NO  
THERAPIST  
NEEDED**

**HELPS TO REDUCE  
SIGNS OF DEPRESSION  
& CHRONIC PAIN**



# BRAIN WAVES

## IT'S ALL ABOUT FREQUENCIES

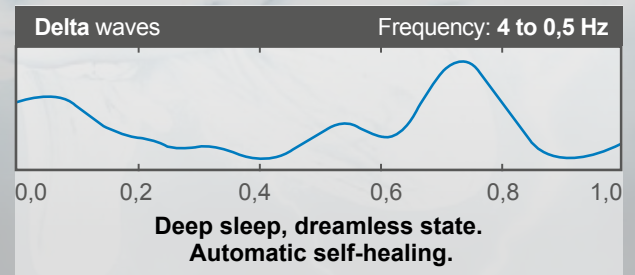
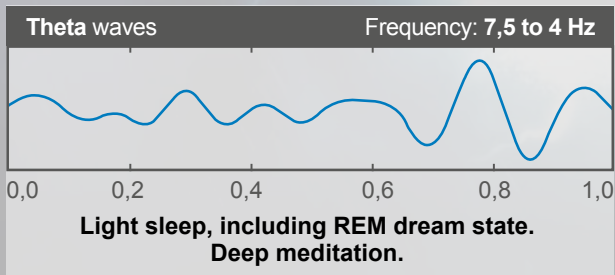
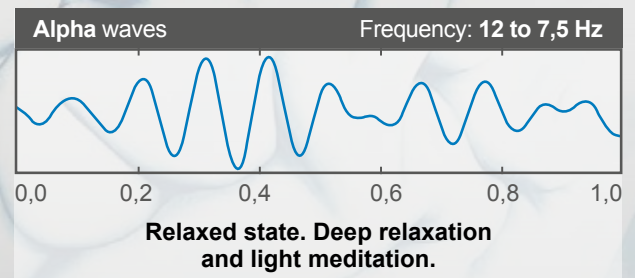
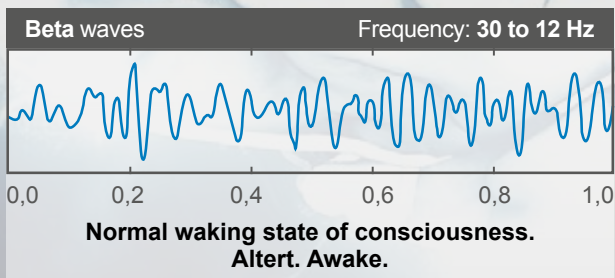
The human brain contains approximately 100 billion neurons and brain cells communicate via electrical signals. Current science & technology does not allow to detect individual neuron activity at that level due to their minute size. However, existing technology can witness overall patterns of brain activity and allow scientists to determine how neurons inside the brain are firing at any given moment.

Overall brain activity has shown that it has a pulse or even a beat, similar to the heart function. These brain pulses, or brainwaves, happen at a variety of speeds. During deep

sleep, for example, the brain pulses about 3 times per second. During high-focused thinking, the brain might pulse as much as 50 times a second.

Different brainwave frequencies have been shown to correspond to different "states of mind". Slow brainwaves feel more relaxing and introspective. Fast brainwaves can be a sign of concentration or stress.

Although brainwave frequencies exist across a wide range, the following 4 groups are particularly interesting:





# SYNCHRONIZATION OF BRAIN WAVES

USING AUDIO- AND VIBRACOUSTIC  
STIMULATION

## AUDIO STIMULATION

Binaural sounds (binaural: lat. with both ears) are a psychoacoustic phenomena that is perceived when two sounds with slightly different frequencies are applied separately via the left and right ear. The brain automatically generates a third frequency, which results from the difference between the two original carrier frequencies. With the help of these frequencies it is now possible to specifically influence the different frequency ranges in the brain, as the neurons automatically try to adapt to the external frequency. These sound frequencies, when precisely delivered, create synchronizations between the left and the right hemisphere. This process is called brainwave entrainment. These binaural sounds are embedded in relaxing, specially composed music and work in a frequency range that is not perceptible to the human ear.

## VIBRACOUSTIC STIMULATION

The second important feature of the Welnamis experience is the technology of pure synchronized sinewaves that are delivered through tactile transducers embedded in the surface of the spa table itself. Perceived as gentle vibrations which affect the energy centers of your body, this sinewave frequencies multiply and accelerate the brainwave entrainment process.

---

*The Welnamis System offers a complete experience of impulses from audio and vibrational frequencies to calm the body and mind and bring both into a relaxed state.*

# EVERYTHING AT A GLANCE

## THE WELNAMIS-PROGRAMS

Easily controlled via a touch screen, pre-programmed treatments are 30 or 60mn in length.

### Welnamis Touch

30-minute program with light vibrations designed to enhance the massage experience with gentle, relaxing music, tones and natural sounds.

### Welnamis Deep

30-minute program with deeper multi-channel vibrations for a more intense physical experience with an orchestrated deep relaxation audio program of musical notes, tones and natural sounds.

### Welnamis Gentle

60-minute program. A combination of lighter and deeper vibrations designed for both relaxation and chakra balancing. Multi-channel frequencies designed to resonate with the body's energy centers and to enhance the massage experience. An audio journey to attain a deep, relaxed state.

### Welnamis Energy

60-minute vibration program designed to balance the body's energy centers, while music, tones and natural sounds help deliver a relaxed mental state.



# WELNAMIS PROGRAM SEQUENCE

1. All programs start in **BETA STATE** (attentive and awake),



2. After a short time the brain reacts to the frequencies and reaches the **ALPHA STATE** (deep relaxation)



3. Dream-like activities take place in the **THETA STATE**. From there, the individual programs are designed to continue in different intensities into the



4. **DELTA STATE**. Just a few moments in this deep, dreamless sleep state allow the brain to release endorphins, serotonin and melatonin.



5. Upon completion of treatment, the brain returns to the original **BETA STATE** with a renewed sense of energy, refreshment and rejuvenation.

## THE SPA TABLE

# MLW AMPHIBIA NEO

Offering ultimate comfort and cocooning effect due to the heated water cushioning, the Amphibia Neo is truly exceptional. Four actuators of the spa bed allow adjustment of the height, back, upper and lower leg sections. Convenient access at 54cm (21") with 4 pre-programmed memory positions, the headrest can be tilted 30° downwards and upwards. Armrests can also be lowered for ideal guest comfort.



## CHROMATHERAPY

### COLOURS & THEIR EFFECTS

Turn your treatment room into an atmospheric place to relax. Just as music or vibration have an influence on our body and mind, visual influences like colors also have a great effect on our mind.



### RED

Revitalizes, activates blood circulation, energizes, promotes vitality and creativity.



### ORANGE

Enhances moods, positive thinking, and desire for physical and mental exploration.



### YELLOW

Liberating and awakening personal power and awareness, extroverted, bright, stimulates healing.



### GREEN

Harmony and regenerative, hopeful, soothes, creates balance within the rhythm of life.



### PURPLE

Relaxes and renews, awakens meditative time, place and being, spiritual aspects..



### BLUE

Celestial and peaceful, cooling, calming, quieting, and cleansing.





## WATER UPHOLSTERY

The comfortable and heatable water cushion of the MLW Amphibia Neo offers the ultimate comfort during the Welnamis treatment. Further more, the water forms an incomparable carrier of the vibration frequencies.

## SCIENTIFICALLY PROVEN

Born of a need at the Miami, Florida U.S. Military Veterans Hospital in 2005, the brainwave entrainment technology used in the Welnamis system has been tested and researched by the U.S. Army, the Miami VA as well as various behavioral health, addiction treatment and acute care facilities.

Follow this link for additional studies and information:  
[www.gharieni.com/Welnamis-system/](http://www.gharieni.com/Welnamis-system/)



Or just scan the  
QR code:



# RETURN ON INVESTMENT

Treatment	Cost	Number of treatments per day	Daily gross revenue	Weekly gross revenue	Monthly gross revenue	Annually gross revenue
Welnamis - 30 minutes	€ 30,00	3	€ 90,00	€ 630,00	€ 2.700,00	€ 32.400,00
Welnamis - 60 minutes	€ 50,00	3	€ 150,00	€ 1.050,00	€ 4.500,00	€ 54.000,00
<b>Total</b>	<b>€ 80,00</b>	<b>6</b>	<b>€ 240,00</b>	<b>€ 1680,00</b>	<b>€ 7.200,00</b>	<b>€ 86.400,00</b>

Investment Welnamis System incl. MLW Amphibia Neo (from)	Investment recouped (in month)
€ 13.000,00	1,8

\*Ex works Germany



08:41

12.399

C +/- % ÷  
7 8 9 +  
4 5 6 -  
1 2 3 ×  
0 . =



MB 8968042

ONE HUNDRED DOLLARS



**GHARLENI** 

Distributed by

Spa Vision

[www.SpaVision.com](http://www.SpaVision.com)